

HAZARDOUS LOCATION LIGHTING BASICS

Atmosphere Groups

Temperature Classification

Substance	Hazard Class	Division Groups	Zone Groups	Max. Surface Temperatures	NEC® 500 CEC®	NEC® 500/IEC-Group II
Acetylene	Class I Flammable Gases	Group A	IIC	450(842)	T1	T1
Hydrogen		Group B	IIC	300(572)	T2	
Ethylene		Group C	IIB	280(536)	T2A	T2
Propane		Group D	IIA	260(500)	T2B	
Methane		Group D	IIA ²	230(446)	T2C	
Combustible Metal Dusts	Class II Combustible Dusts	Group E ¹	IIIC ³	215(419)	T2D	T3
Combustible Carbonaceous Dust		Group F	IIIB ³	200(392)	T3	
Combustible Dusts not in Group E or F (Flour, Grain, Wood, Plastics, Chemicals)		Group G	IIIB ³	180(256)	T3A	
Combustible Fibers and Flyings		Class III Fibers and Flyings	Not Applicable	IIIA ³	165(329)	
				160(320)	T3C	
				135(275)	T4	T4
				120(248)	T4A	
				100(212)	T5	T5
				85(185)	T6	T6

Note 1: Group E is applicable to Class II, Division 1 only.

Note 2: Methane is a Group IIA Gas for non-mining applications.

Note 3: Group IIIA, IIIB and IIIC have not been adopted by the Canadian Electrical Code.

Classification of Divisions and Zones

Hazard Level	Division Scheme	Zone Scheme	Definitions
Continuous Hazard	Division 1	Zone 0 / Zone 20	A place in which an explosive atmosphere is continually present
Intermittent Hazard		Zone 1 / Zone 21	A place in which an explosive atmosphere is likely to occur in normal operation
Hazard Under Abnormal Conditions	Division 2	Zone 2 / Zone 22	A place in which an explosive atmosphere is not likely to occur in normal operation, but may occur for short periods

IP Codes

1st No.	Solid Objects
0	No protection
1	Objects greater than 50mm
2	Objects greater than 12.5mm
3	Objects greater than 2.5mm
4	Objects greater than 1mm
5	Dust protected
6	Dust proof

2nd No.	Liquids
0	No protection
1	Vertically dripping
2	Dripping up to 15°
3	Limited spraying
4	Splashing from all directions
5	Hosing jets from all directions
6	Strong hosing jets from all directions
7	Temporary immersion
8	Continuous immersion
9	Steam-jet cleaning

IK Ratings

IK Code	Level of Protection Achieved
IK00	Not protected
IK01	Protected against 0.14 joules impact
IK02	Protected against 0.2 joules impact
IK03	Protected against 0.35 joules impact
IK04	Protected against 0.5 joules impact
IK05	Protected against 0.7 joules impact
IK06	Protected against 1 joules impact
IK07	Protected against 2 joules impact
IK08	Protected against 5 joules impact
IK09	Protected against 10 joules impact
IK10	Protected against 20 joules impact
IK11	Protected against 40 joules impact



RED SKY
SERIOUSLY SAFE LIGHTS™

HARSH & HAZARDOUS (UL)

BLOCK-MINI SERIES H1

For low wattage explosion proof applications
Class I Division 1, Class I Division 2
Class II Division 1, Class II Division 2
Class III



Wattage: 21W 40W 50W 60W
Lumens (Lm): 4,220/6,500/7,180/8,515
Warranty: LEDs: 10 Years, Driver: 7 Years

BLOCK SERIES H1

For explosion proof environments
Class I Division 1, Class I Division 2
Class II Division 2, Class III



Wattage: 80W 100W 120W 150W
Lumens (Lm): 12,320/14,162/17,680/21,227
Warranty: LEDs: 10 Years, Driver: 7 Years

LINEAR TUFF SERIES

For explosion proof environments with low ceiling applications
Class I Division 1, Class I Division 2



Wattage: 30W 40W 60W 80W
Lumens (Lm): 4,608/6,192/8,670/10,810
Warranty: LEDs: 10 Years, Driver: 7 Years

LINEAR SERIES

For hazardous environments with low ceiling applications
Class I Division 2, Class II Division 1
Class II Division 2, Class III



Wattage: 30W 40W 60W 80W
Lumens (Lm): 4,426/5,795/9,185/12,026
Warranty: LEDs: 10 Years, Driver: 7 Years

BLOCK-MINI SERIES H2

For a lower wattage, compact hazardous location light
Class I Division 2, Class II Division 1
Class II Division 2, Class III



Wattage: 21W 40W 50W 60W
Lumens (Lm): 4,220/6,500/7,180/8,515
Warranty: LEDs: 10 Years, Driver: 7 Years

BLOCK SERIES H2

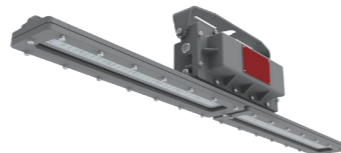
For harsh and hazardous environments
Class I Division 2, Class II Division 2,
Class III



Wattage: 80W 100W 120W 150W
Lumens (Lm): 12,320/14,162/17,680/21,227
Warranty: LEDs: 10 Years, Driver: 7 Years

LINEAR TUFF EMERGENCY SERIES

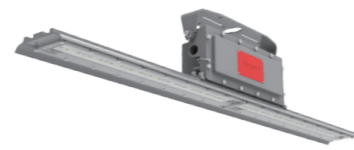
For explosion proof environments with low ceiling applications
Class I Division 1



Wattage: 80W
Lumens (Lm): 10,057
Warranty: LEDs: 10 Years, Driver: 7 Years, Battery: 5 Years

LINEAR EMERGENCY SERIES

For hazardous environments with low ceiling applications
Class I Division 2, Class II Division 1
Class II Division 2, Class III



Wattage: 40W 80W
Lumens (Lm): 6,183/11,486
Warranty: LEDs: 10 Years, Driver: 7 Years, Battery: 3 Years

HIGH TEMPERATURE

MODULAR HOT SERIES

For indoor high bay for high temperature locations

Operating Temperature:
-40°F to +158°F (-40°C to +70°C) - TG



Wattage: 200W 400W 600W 800W
Lumens (Lm): 30,500/57,500/87,500/114,500
Warranty: 5 Years

HIGH BAY HOT SERIES

For harsh, extreme heat environments

Operating Temperature:
-40°F to +176°F (-40°C to +80°C)



Wattage: 150W
Lumens (Lm): 22,157 (110°), 19,970 (60°)
Warranty: Standard: 3 Years; Extended: 5 Years

HARSH & HAZARDOUS (UL)

ROUND SERIES

For corrosive & hazardous locations
Class I Division 2, Class II Division 1
Class II Division 2, Class III



Wattage: 35W 40W 45W 55W 60W 65W
Lumens (Lm): 5,283/6,439/7,307/8,240/8,774/9,524
Warranty: LEDs: 10 Years, Driver: 7 Years

ROUND-MAX SERIES

For indoor high/mid bay & outdoor
Class I Division 2, Class II Division 1
Class II Division 2, Class III



Wattage: 80W 120W 150W 200W
Lumens (Lm): 12,000/18,000/22,500/30,000
Warranty: LEDs: 10 Years, Driver: 7 Years

HARSH (UL)

CRANE MASTER SERIES UL

Fixed lighting for larger vibrational areas.

UL1598
UL1598A
5G



Wattage: 300W
Lumens (Lm): 42,211
Warranty: 5 Years

MODULAR MAX SERIES

For harsh and hazardous environments
Class I Division 2, Class II Division 1,
Class II Division 2, Class III



Wattage: 90W 120W 190W 260W
310W 390W 440W
Lumens (Lm): 15,965/20,460/31,305/39,864
49,486/60,933/69,987
Warranty: LEDs: 10 Years, Driver: 7 Years

SCAN FOR LATEST PRODUCT INFO



Contact us:
+1 (262) 456-5002
contact@redskyllighting.com
www.redskyllighting.com